

(MRS. POTTS and MADAME DE LA GRANDE BOUCHE lead BELLE off. #15 GASTON.)

## SCENE 6: The Tavern

(GASTON, sullen and morose, enters. VILLAGERS look on. LEFOU approaches.)

**GASTON**

Who does she think she is? That girl has tangled with the wrong man!

**LEFOU**

Darn right!

**GASTON**

No one says no to Gaston! Dismissed! Rejected! Publicly humiliated! It's more than I can bear.

**LEFOU**

Bear? Where???

(LEFOU ducks behind GASTON and shudders.)

**GASTON**

Oh, Lefou... I'm disgraced.

**LEFOU**

(emerges from behind GASTON)

Who, you? Never! Gaston, you've got to pull yourself together.

# Gaston

46 **LEFOU:**

Gosh it dis - turbs me to see you, Gas -

49

ton, look - ing so down in the

52 (LEFOU):



dumps. Ev - 'ry guy

55



here'd like to be you, Gas - ton,

58



ev - en when tak - ing your lumps.

61



There's no man in town as ad -

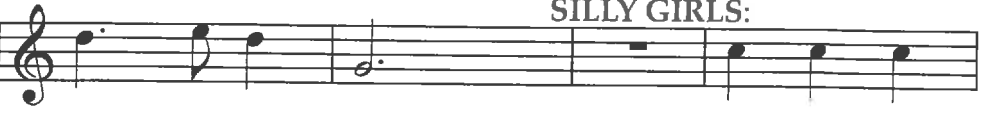
64



mir - ed as you. You're ev - 'ry - one's

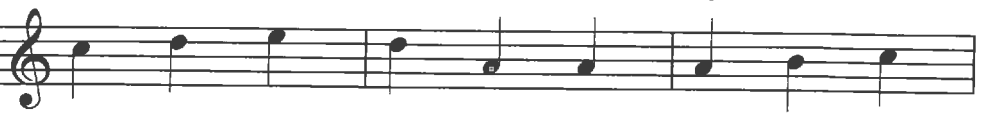
67

SILLY GIRLS:



fa - vor-ite guy. Ev - 'ry - one's

71



awed and in - spi - red by you and it's

74



not ver-y hard to see why.

**LEFOU:**

78 **A tempo**

No one's slick as Gas -

81 ton, no one's quick as Gas - ton, no one's

neck's as in - cred - i - bly thick as Gas -

84 neck's as in - cred - i - bly thick as Gas -

ton. For there's no man in town half as

87 **SILLY GIRLS:**

man - ly. Per - fect! A

man - ly. Per - fect! A

90 pure par - a - gon! You can

pure par - a - gon! You can

93 **LEFOU:**

ask an - y Tom, Dick or Stan - ley,

ask an - y Tom, Dick or Stan - ley,

96 and they'll tell you whose team they'd pre -


and they'll tell you whose team they'd pre -

99 **LEFOU,**  
**SILLY GIRLS:**

and they'll tell you whose team they'd pre -

and they'll tell you whose team they'd pre -

102 (LEFOU, SILLY GIRLS): *rit.*



fer to be on!

(The VILLAGERS and SILLY GIRLS try to cheer up their idol, GASTON.)

104 ALL: *A tempo*



No one's been like Gas -

107 LEFOU:



ton, a king - pin like Gas - ton. No one's

110



got a swell - cleft in his chin like Gas -

113 GASTON:



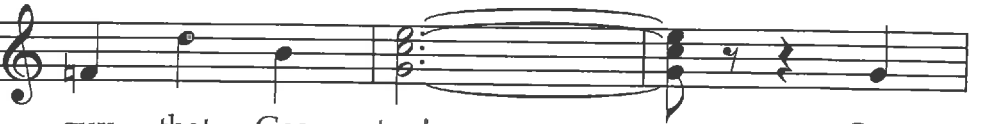
ton! As a spec - i - men, yes I'm in -

116 ALL:



tim - i - dat - ing! My, what a

119



guy that Gas - ton! Give